

Soil investigation in the Biogenic Nature Reserve of Agoraie, Liguria (IT)

Sabina Ghislandi



LOCATION AND CHARACTERISTICS OF THE RISERVE



Region: Liguria

Province: Genova

Municipality: Rezzoaglio

Altitude: 1325 – 1360 m s.l.m.

Extension: 16.90 ha

ENVIRONMENT



Lago degli Abeti



Seasonal pond



Lago di Sotto



Lago Riondo

VEGETATION



Lycopodiella inundata



Beeches



Drosera rotundifolia



Conifers

REGULATIONS AND MANAGEMENT

1971

- **Integral Nature Reserve**

1977

- **Biogenetic Nature Reserve**

1986

- **Oriented Nature Reserve**

Management body: Carabinieri Biodiversity Group of Lucca



HISTORIC AND ARCHAEOLOGICAL INTEREST

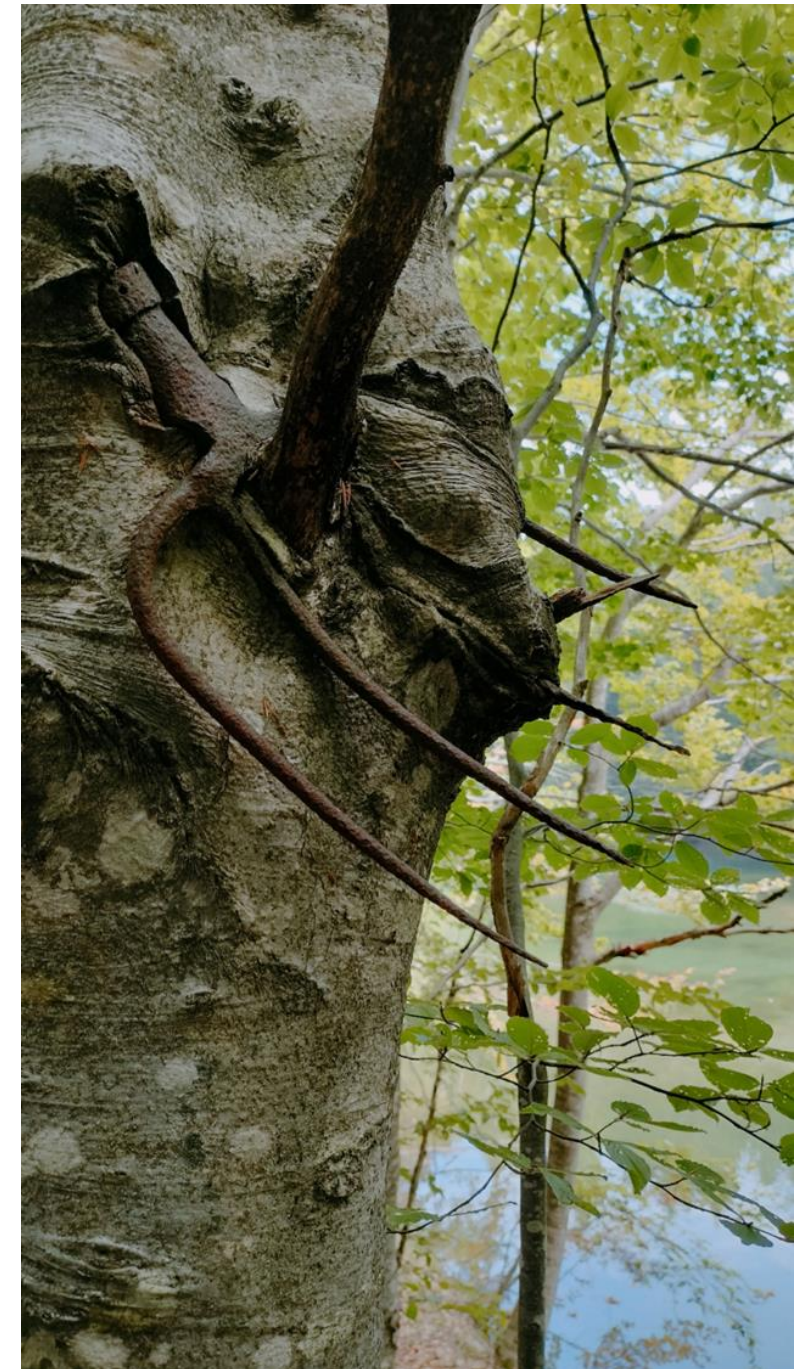
Collective
lands



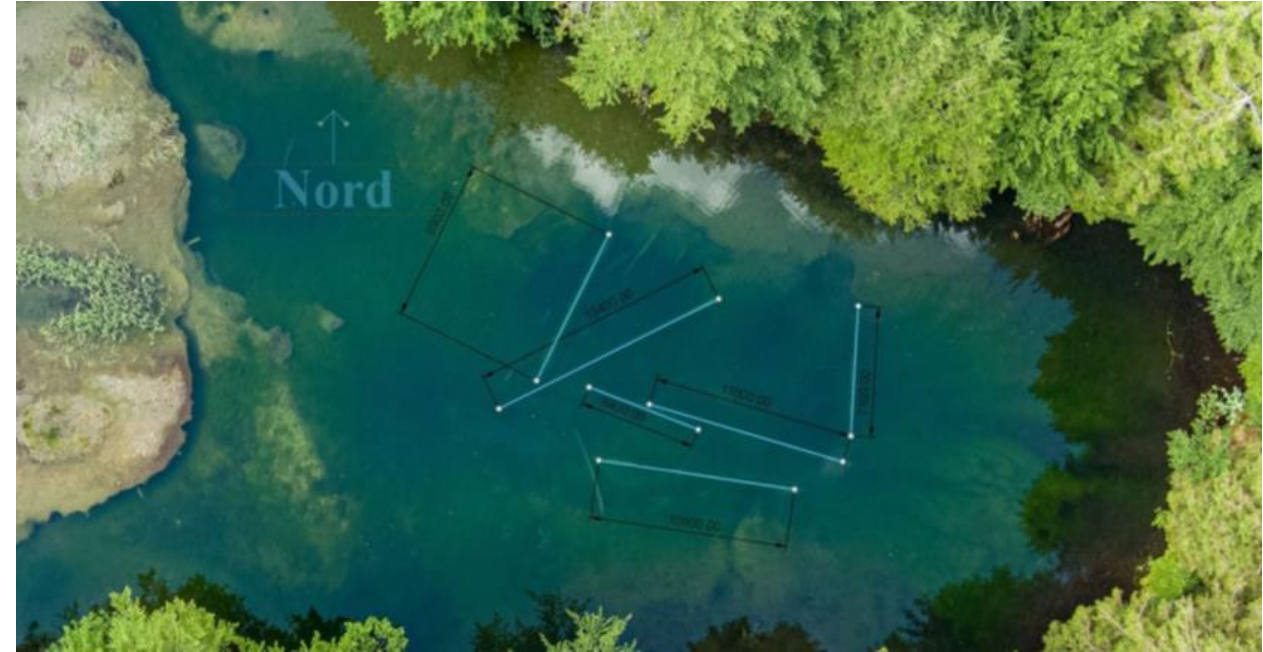
State forest

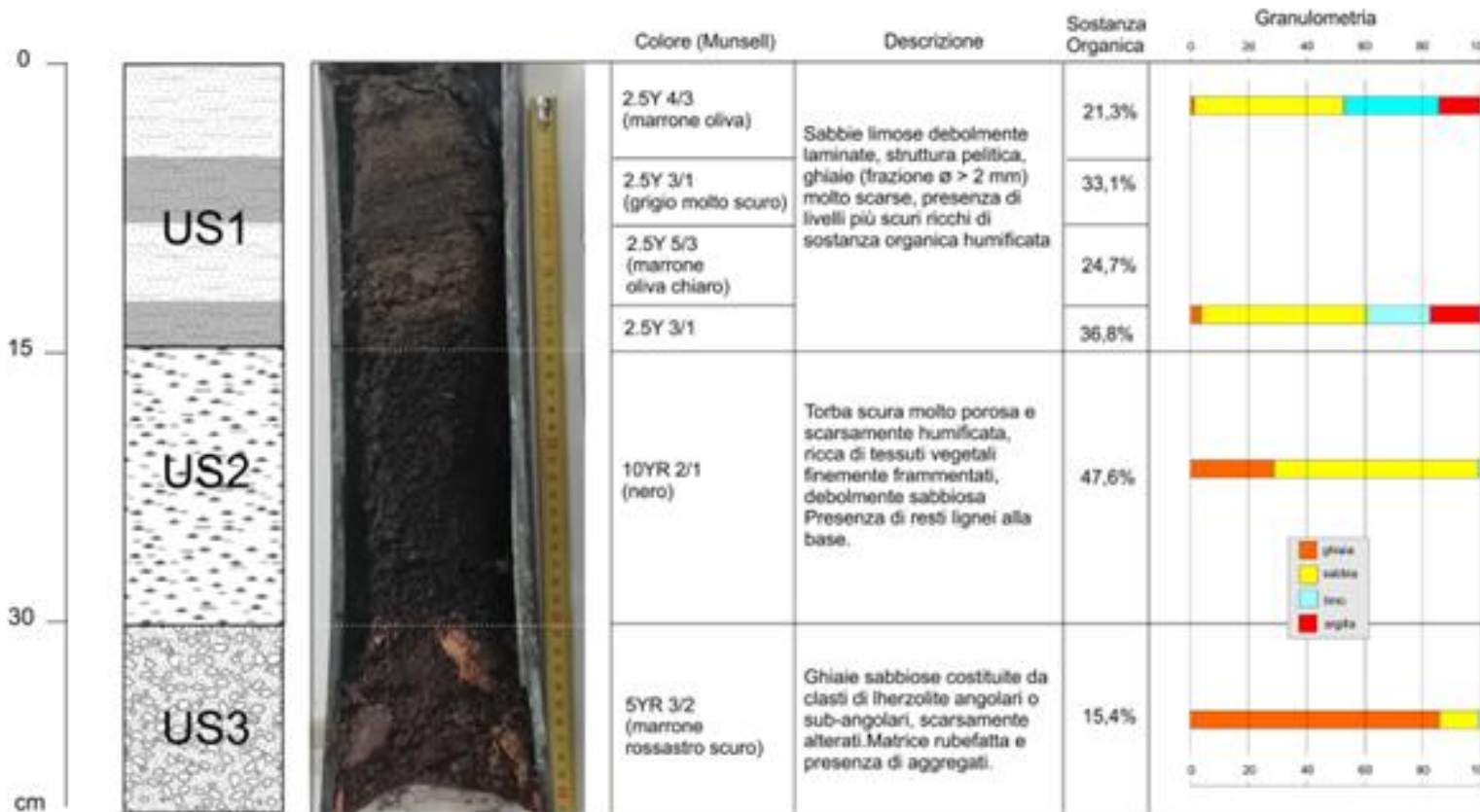
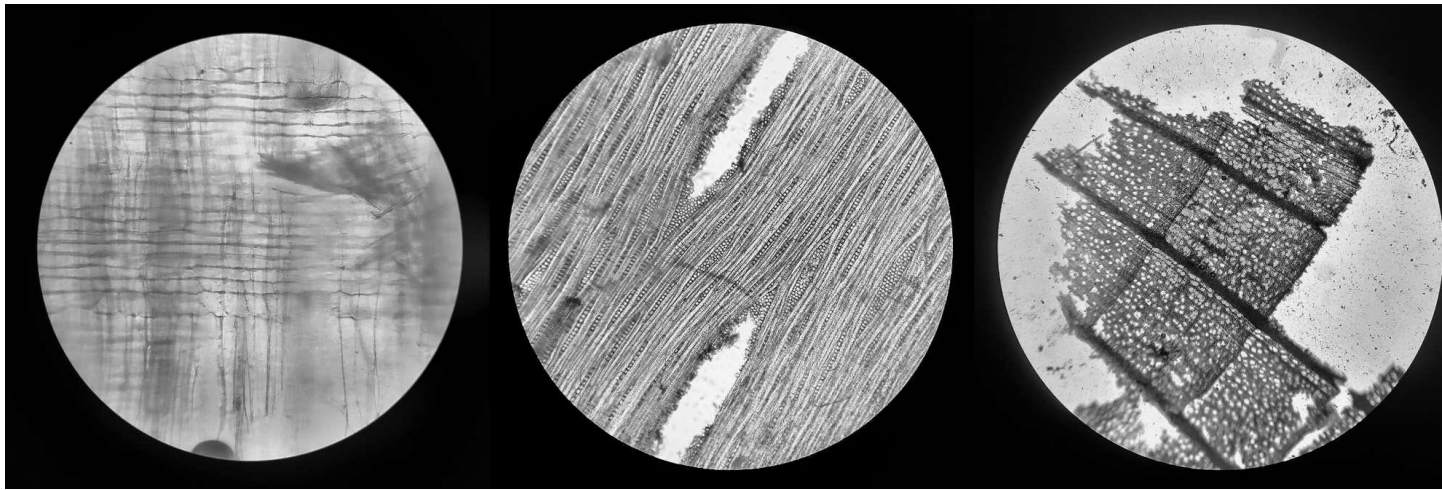


Reserve



2021: SAMPLING AND INVESTIGATION OF SUBMERGED TRUNKS AND LAKE SEDIMENTS



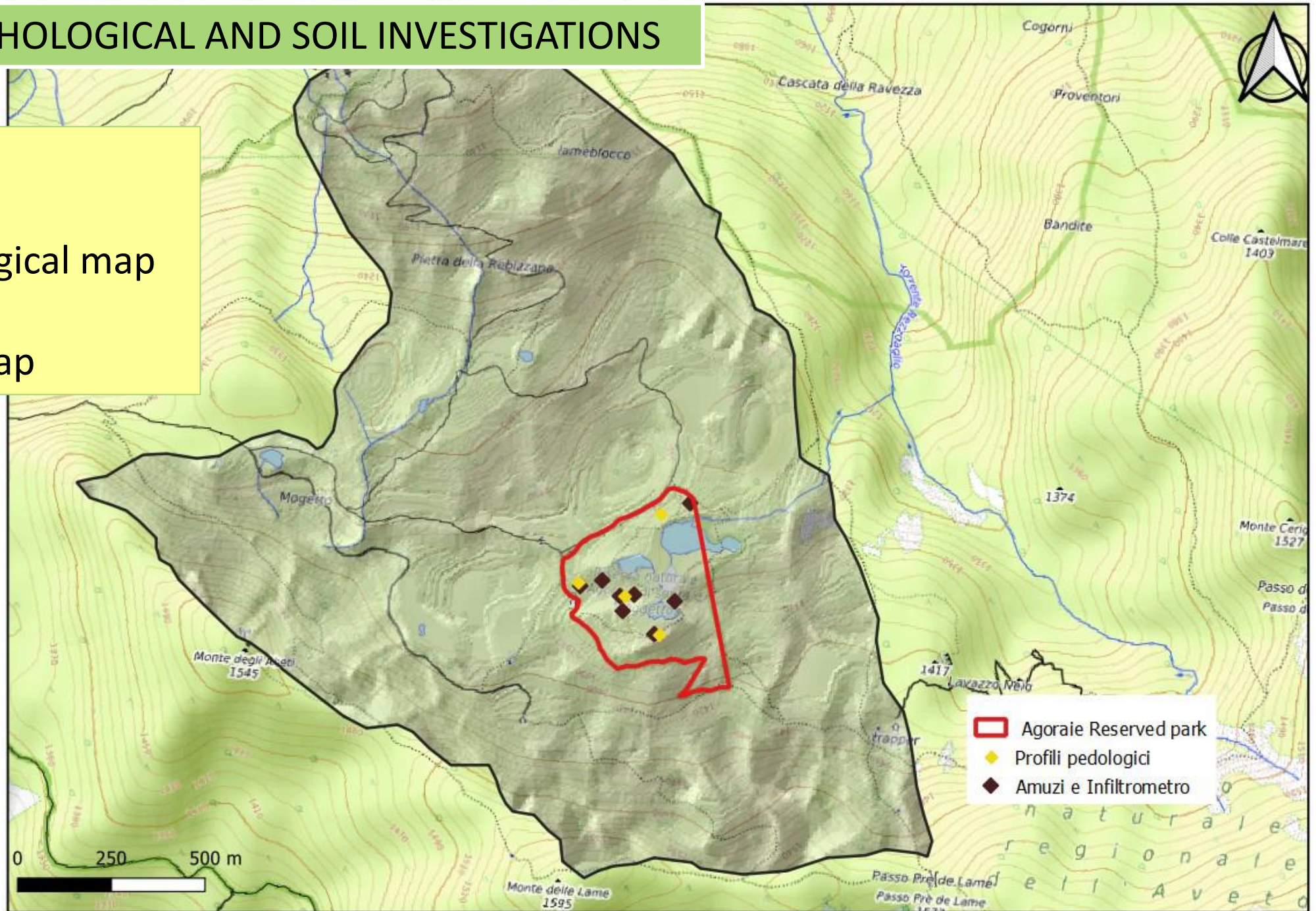


2023: GEOMORPHOLOGICAL AND SOIL INVESTIGATIONS

OUTPUTS:

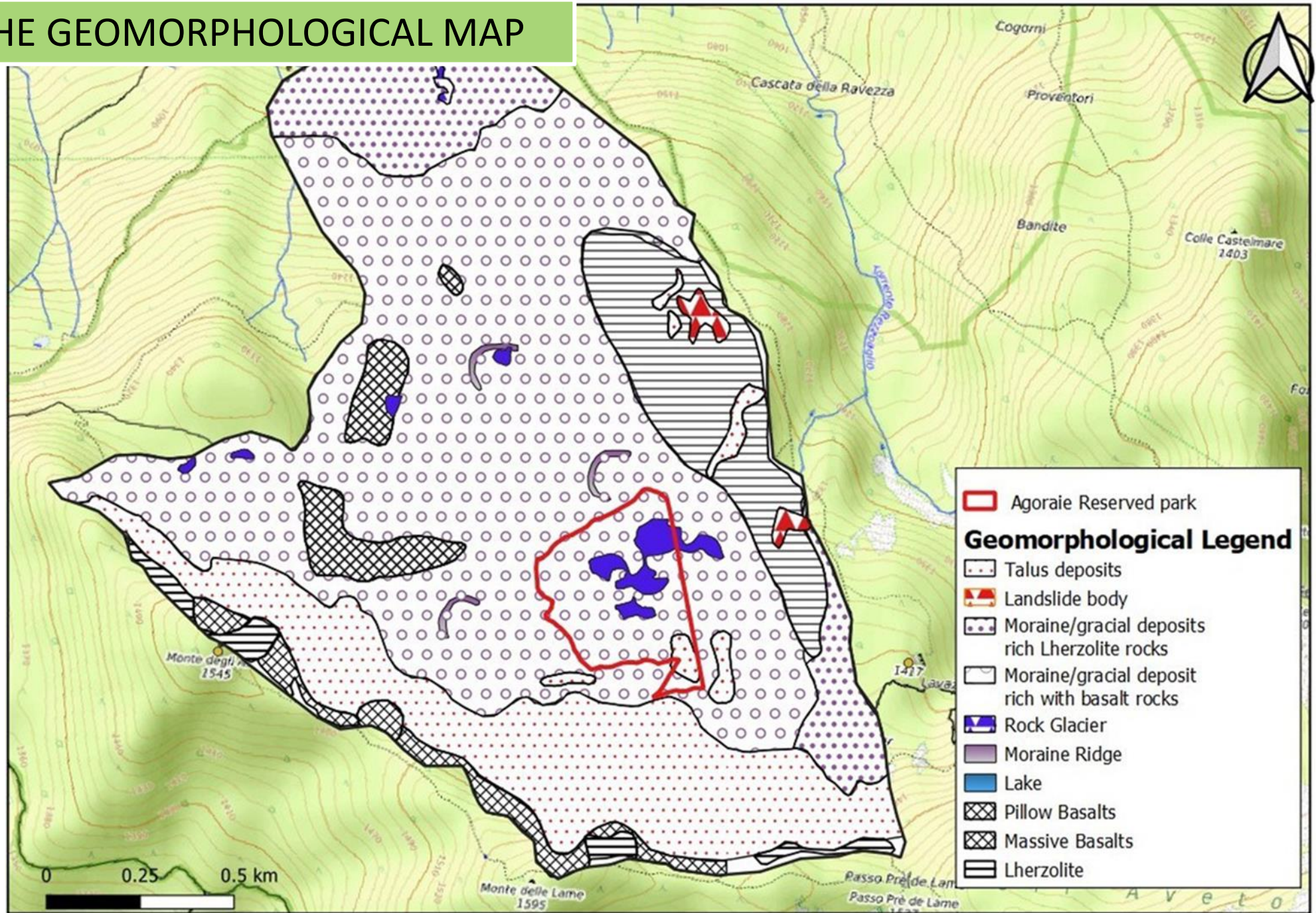
Geomorphological map

Pedological map



(graphic elaboration by
P. Niyokwiringirwa)

FIRST DRAFT OF THE GEOMORPHOLOGICAL MAP



(graphic elaboration by
P. Niyokwiringirwa)

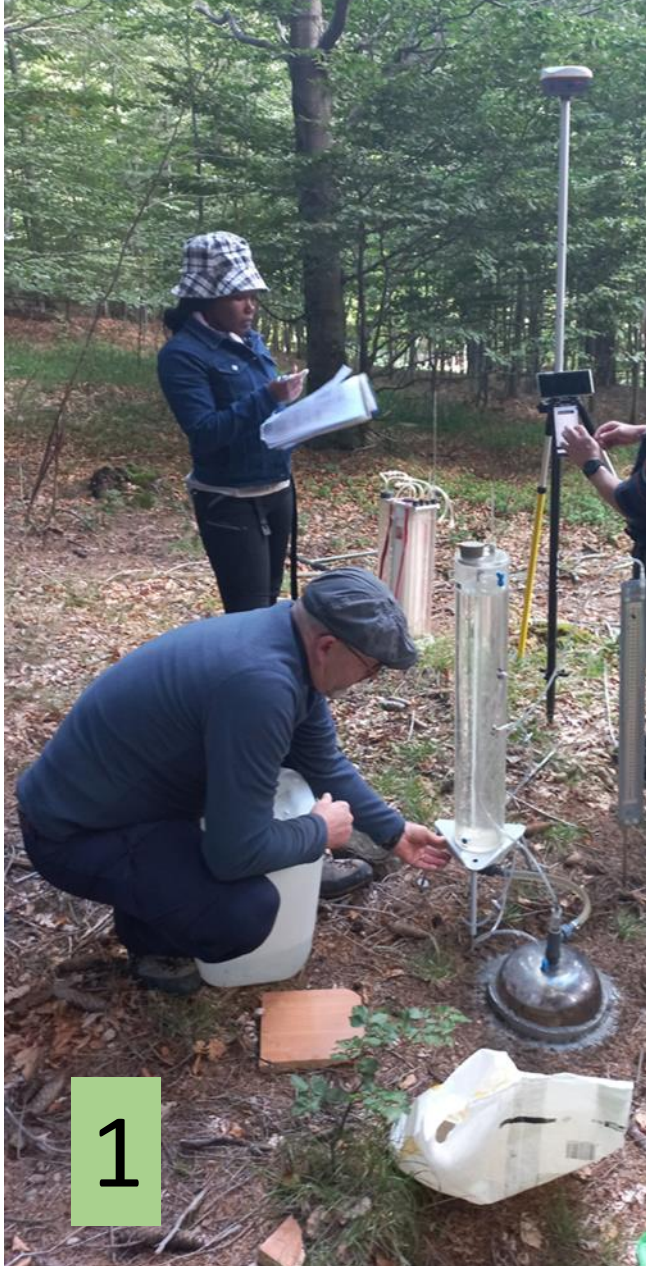
SOIL PROFILE INVESTIGATIONS: E



SOIL PROFILE INVESTIGATIONS: DESCRIPTION AND OBSERVATIONS



SOIL PROFILE INVESTIGATIONS: HYDROLOGICAL ANALYSIS



1. HOOD INFILTROMETER

- Measure the infiltrability

2. AMOOZEMETER

- Measure the permeability

PRELIMINARY RESULTS

High permeability
and infiltrability



Very well drained soils



Erosion caused by
anthropic activities



SOIL PROFILE P3: EXAMPLE OF RAPID SOIL EROSION AND DEPOSIT



CONCLUSION AND FUTURE AIMS

SOIL

Natural and non-renewable resource for the ecosystem



PEDOLOGICAL AND GEOMORPHOLOGICAL MAPS

Information support necessary to regulate decisions



CONSERVATION AND SUSTAINABLE MANAGEMENT

Practical purposes, scientific and dissemination projects

